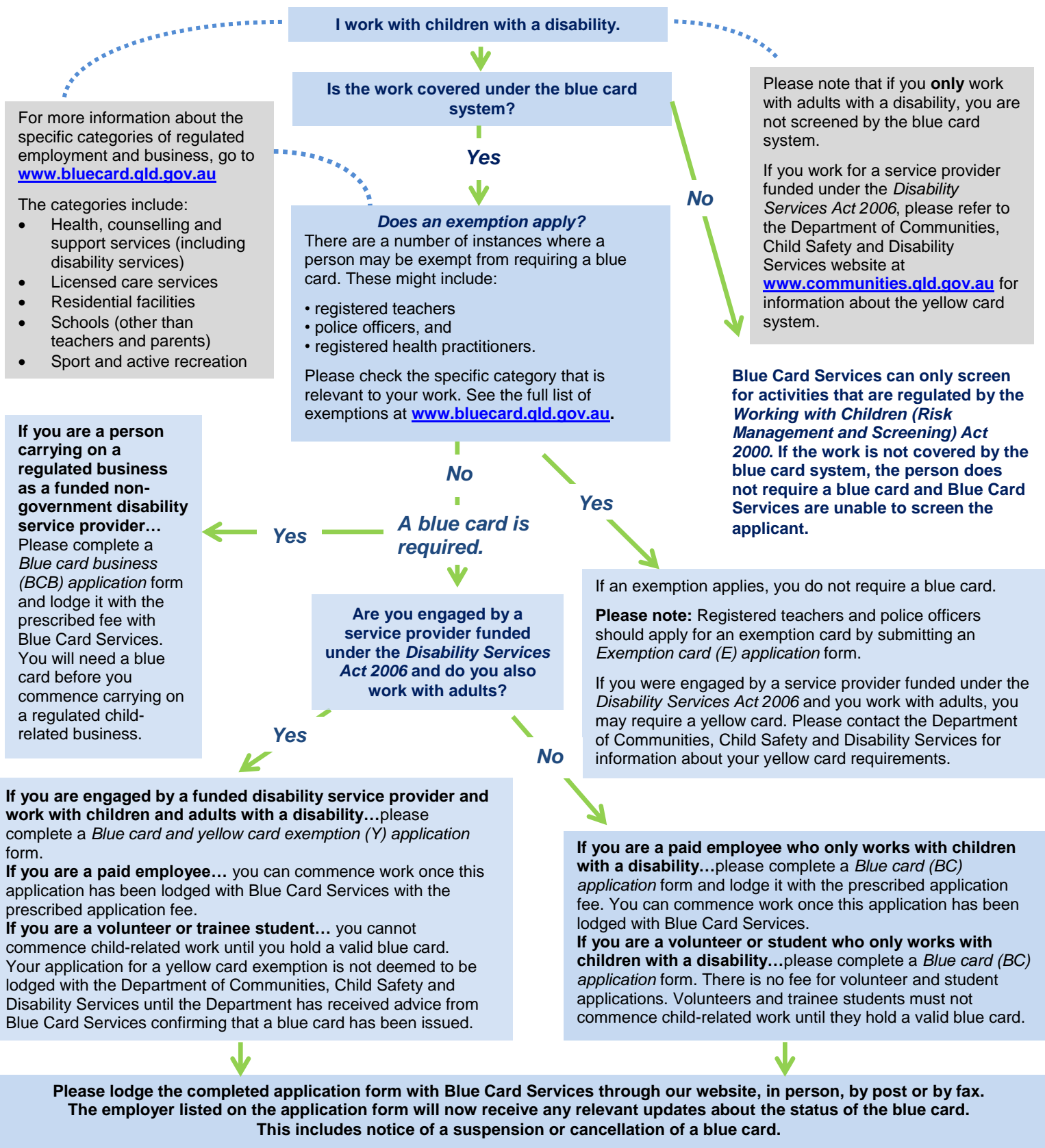


Application process for disability service providers



For more information about the specific categories of regulated employment and business, go to www.bluecard.qld.gov.au

The categories include:

- Health, counselling and support services (including disability services)
- Licensed care services
- Residential facilities
- Schools (other than teachers and parents)
- Sport and active recreation

Please note that if you **only** work with adults with a disability, you are not screened by the blue card system.

If you work for a service provider funded under the *Disability Services Act 2006*, please refer to the Department of Communities, Child Safety and Disability Services website at www.communities.qld.gov.au for information about the yellow card system.